



UNDERWATER DETECTION CAMERA FAQ'S

What are they and how do they work?

A series of small cameras are fitted to the sides of the swimming pool tank, these cameras record 'real-time' video images underwater that are displayed on a monitor located on the lifeguards chair, the images display full coverage of the pool tank giving the lifeguard 100% vision below the surface. However, the unique feature of the underwater detection camera system is its ability to detect incidents in the swimming pool, supported by intelligent computer software, the cameras track each swimmer and detects any lack of or irregular movement, this then triggers a series of alerts to the lifeguard for them to assess/respond. Above water level cameras are also installed to provide a full view of the swimming pool hall. All of the cameras are overt; there is no covert surveillance undertaken in the leisure centres.

What type of incidents does the underwater detection camera system detect?

The intelligent computer software tracks all movement below the swimming pool surface and can recognise the difference between 'normal' swimming movement and lack of or irregular movement. The system alerts the lifeguard to potential incidents, including; weak swimmers, unconscious swimmers and swimmers that are having a medical event (e.g seizure).

Which centres are the cameras installed?

Stokesley Leisure Centre, consideration will be given to installing the system at other leisure centres in Hambleton as part of the councils investment programme.

Do underwater detection cameras replace lifeguards?

No, the system is designed to support the lifeguard and improve the safety of swimming pool users, referred to as 'blended lifeguarding'. **There will always be a lifeguard supervising the swimming pool.**

What happens to the camera footage?

The lifeguard can only see 'real-time' images to assist in the daily management of the swimming pool. The video footage is recorded and held on the councils secure database for 7 days, this is to allow review of any swimming pool incidents. This footage will not be accessed by any person at any time unless it is for a legitimate purpose including the investigation of a public safety or criminal incident. The database is stored in a secure location, is password protected and accessible only to certain members of the centre management team that are trained in data protection policies. Hambleton District Council controls this data and is responsible for the capturing, retention and deletion of images. Images are automatically deleted after 7 days unless required for an investigation; in this case, the images will be retained until the conclusion of any such investigation. A Data Protection Impact Assessment has been carried out on this system and has been published.

Can I see the camera footage?

Third parties can only request to see camera footage as part of an official investigation and for a legitimate interest e.g detection or prevention of crime, public safety or national security. In this instance, a request must be made via an official Data Request Form in line with the Data Protection Act 2018. Where Data Request Forms are approved, only Individuals that are directly involved in the investigation/incident will have their identity disclosed, those in the footage that are not involved will have their identity protected.

Are the cameras on all of the time?

Yes, the system is in operation 24/7, 365 days per year.

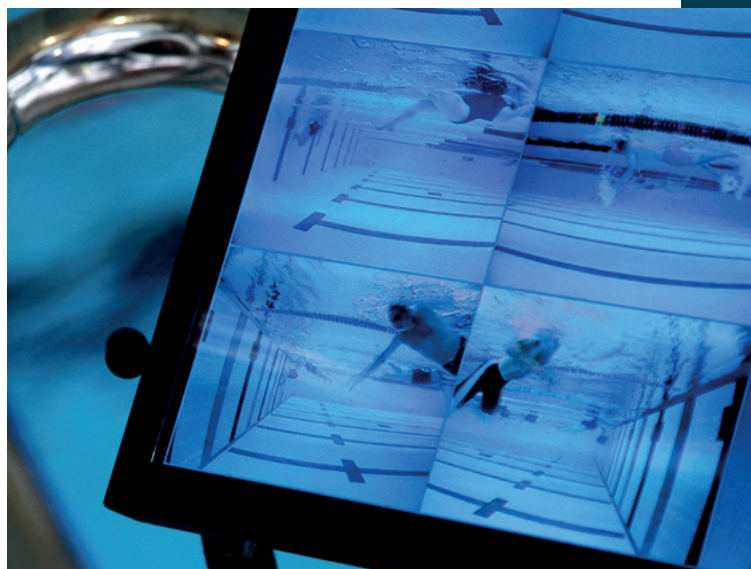
How effective are the underwater detection cameras?

Underwater detection cameras have become a recognised safety system for swimming pool operators as highlighted by the significant rise in their prevalence in leisure centres across the UK. Furthermore, in February 2018, the Health and Safety Executive (HSE) published the following in their guidance document - Health and Safety in Swimming Pools (HSG179); "Cameras and computer aided surveillance systems may also be used to assist in pool supervision"

The underwater detection camera system is incorporated into our Lifeguard professional training programme and is supported by our detailed safe systems of work and comprehensive risk assessment.

Where can I get more information about the underwater detection cameras?

<https://www.poolview.co.uk/>



Further details can be found at hambleton.gov.uk/zest